

# BCH SERIES



## Single Point - Load Cell 500kg / 1t / 1.5t / 2t



- Anodized Aluminium
- Off center compensated
- Max. Platform 1200 x 1200mm

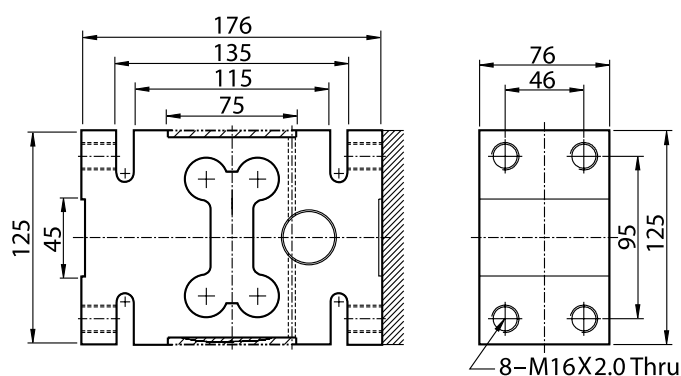
**IP65**  
Dust proof and  
water-protected

### Technical Specifications

Max Capacity (rated load)	kgf	500kg, 1t, 1.5t, 2t
Rated Output	mV / V	2.0 ± 0.2
Zero Balance	mV / V	0.0 ± 0.1
Accuracy Class	-	-
Combined Error	% R.O.	0.03
Repeatability	% R.O.	0.01
Creep for 30min.	% R.O.	0.03
Resolution	-	≤1/3000
Division	mV/V	0.00067
Temperature Effect on - Zero Value	%/10 °C	0.028
Temperature Effect on - Output Value	%/10 °C	0.014
Excitation - Recommended	V	10
Excitation - Maximum	V	15
Resistance - Input	Ω	400 ± 20
Resistance - Output	Ω	350 ± 3.5
Resistance - Insulation	MΩ	> 2000
Compensated Temperature Range	°C	-10 to +40
Operating Temperature Range	°C	-20 to +70
Safety Overload	% R.L	150%
Cable Specification	-	ø5.4 x 4p x5M (Uretane)

### Dimension

Unit in mm



# CAS

UNIT 8, NORTHLINK, 459 TUFNELL ROAD  
BANYO QLD 4014, AUSTRALIA

TEL: +61 (0)7 3267 7767 FAX: +61 (0)7 32 67 1818

EMAIL: sales@cassscale.com.au

<http://www.cassscale.com.au>

Specifications are subject to change for improvement without prior notice.