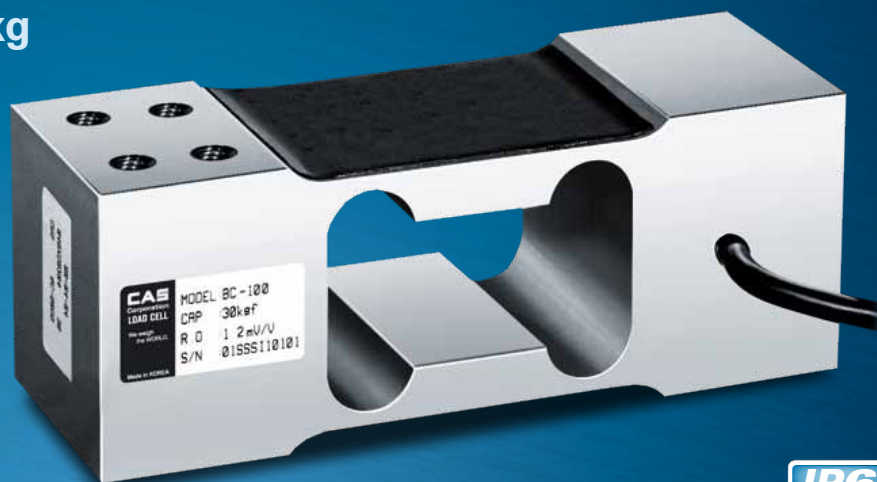


BC SERIES



Single Point - Load Cell 30kg / 60kg / 100kg / 150kg



- Low cost
- Off center compensated
- Single point
- Anodized Aluminium

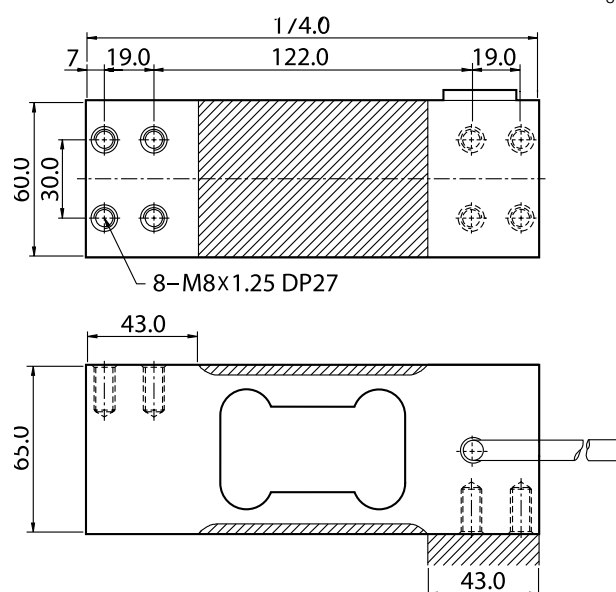


Technical Specifications

Max Capacity (rated load)	kgf	30kg, 60kg, 100kg 150kg
Rated Output	mV / V	1.2 (Approx)
Zero Balance	mV / V	0.0 ± 0.06
Accuracy Class	-	-
Combined Error	% R.O.	0.03
Repeatability	% R.O.	0.01
Creep for 30min.	% R.O.	0.03
Resolution	-	≤1/3000
Division	mV/V	0.0004
Temperature Effect on - Zero Value	%/10 °C	0.028
Temperature Effect on - Output Value	%/10 °C	0.015
Excitation - Recommended	V	10
Excitation - Maximum	V	15
Resistance - Input	Ω	420 ± 20
Resistance - Output	Ω	350 ± 3.5
Resistance - Insulation	MΩ	> 2000
Compensated Temperature Range	°C	-10 to +40
Operating Temperature Range	°C	-20 to +70
Safety Overload	% R.L	150%
Cable Specification	-	ø5 x 4p x 1.365M (P.V.C)

Dimension

Unit in mm



CAS

UNIT 8, NORTHLINK, 459 TUFNELL ROAD
BANYO QLD 4014, AUSTRALIA

TEL: +61 (0)7 3267 7767 FAX: +61 (0)7 32 67 1818

EMAIL: sales@cassscale.com.au

<http://www.cassscale.com.au>

Specifications are subject to change for improvement without prior notice.



AU-71101102