

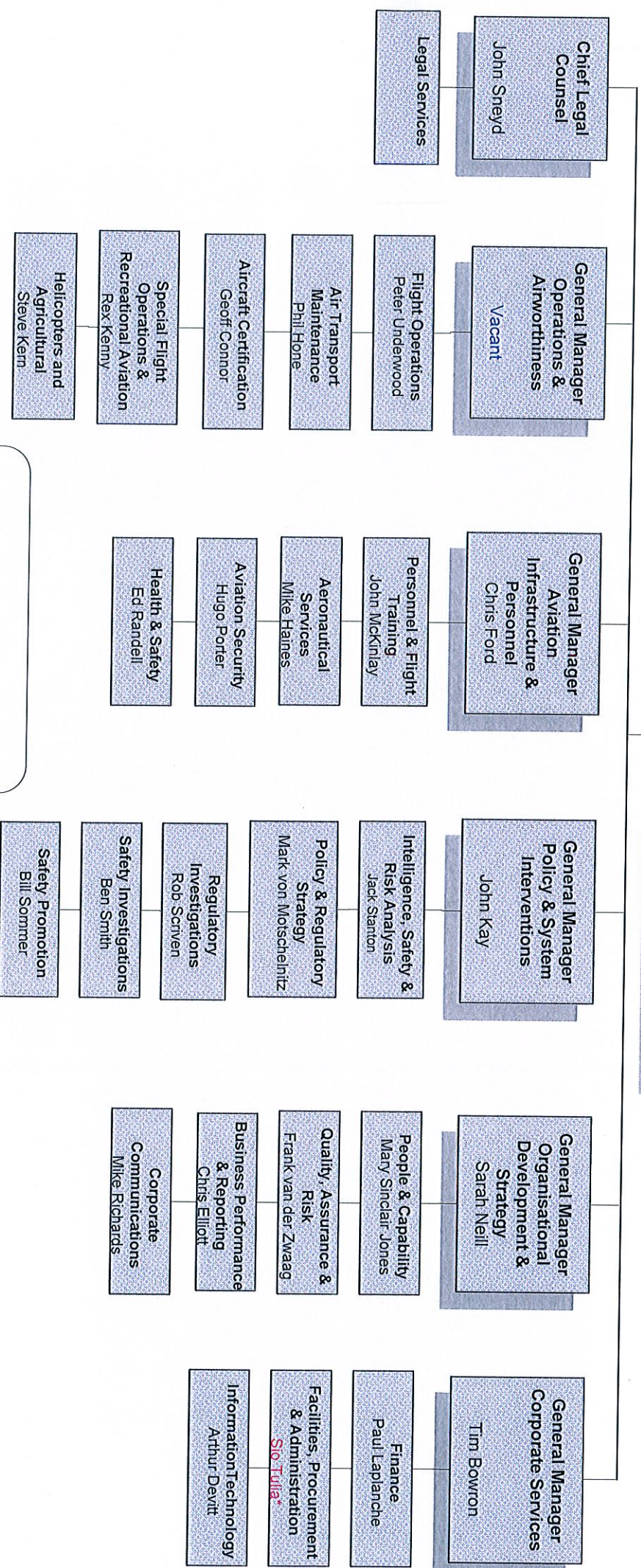
Civil Aviation Authority

of New Zealand



**Chief Executive Officer /
Director of Civil Aviation**
Graeme Harris

Executive Assistant to Director
Margaret Ninness



Legend

- Blue - Vacancy within existing establishment
- Red* - Contractor within establishment
- Red** - Contractor outside establishment
- Pink* - Fixed Term within establishment
- Pink** - Fixed Term outside establishment
- Purple - Internal secondment

Aviation Infrastructure & Personnel Group

Reports to Director of Civil Aviation



General Manager Aviation Infrastructure and Personnel
Chris Ford

Group Executive Officer
Dianne Parker

Manager Personnel & Flight Training
John McKinlay

#Team Leader Licensing & Flight Training
Mark Boyle

Principal Aviation Examiner
Mike Tucker

Team Leader Medical Certification
Judi Te Hula

Principal Medical Officer
Dougal Watson

Senior Medical Officer
Claude Preiner (0.8FTE)
Anthony Bonert (0.4FTE)
Rajib Ghosh

Licensing Adviser, Medical
Dianne Lassche
Hedy Mulholland
Andrea Keenan
Gillian Brown
Charlotte Hollingsworth

Licensing Adviser, Medical/Administrator
Desrae Martin

Aviation Examiner, GA Flight Training
Andy McKay
Vacant

Training Standards Development Officer
Carlton Campbell

Aviation Examiner, Maintenance Engineering
Rick Ellis

Aviation Examiner
John Parker

Licensing Advisers
Christine Kirker
Suzanne Shirriff

Manager Aeronautical Services
Mike Haines

Aeronautical Services Officer - Aerodromes and Dangerous Goods
Max Evans

Aeronautical Services Officer - Telecommunications
Toby Farmer

Aeronautical Services Officer - Air Traffic Services
Paula Moore
Perry Matthews
Peter White

Aeronautical Services Officer - Aerodromes & Aeronautical Information
Vacant

Manager Security
Hugo Porter

Senior Technical Specialist Aviation Security
Debbie Sulsted

Technical Specialist Aviation Security
Mark Stephen
Rod Albrechtisen
Kevin Jackson

Manager Health & Safety
Ed Randell

Health & Safety Inspector
Andrew Schlup

Nicole Grosvenor
Brian Cork **
Herman van Krandenburg**
Peter Leslie**

M. Woodhouse **
G Withers**
L Sowerby**
B Carruthers**
D McCracken**

Legend

- Blue - Vacancy within existing establishment
- Red* - Contractor within establishment
- Red** - Contractor outside establishment
- Green - Casual Employees
- Orange - Temporary Employees
- Pink* - Fixed Term within establishment
- Pink** - Fixed Term outside establishment
- Purple - Internal secondment

Director of Civil Aviation:
Date: September 2013

(Total : 36 FTE)